

alwitra  united
on top.



www.blauer-engel.de/en/uz224

The homogeneously
weldable EDPM
waterproofing membrane.

EVALASTIC[®]

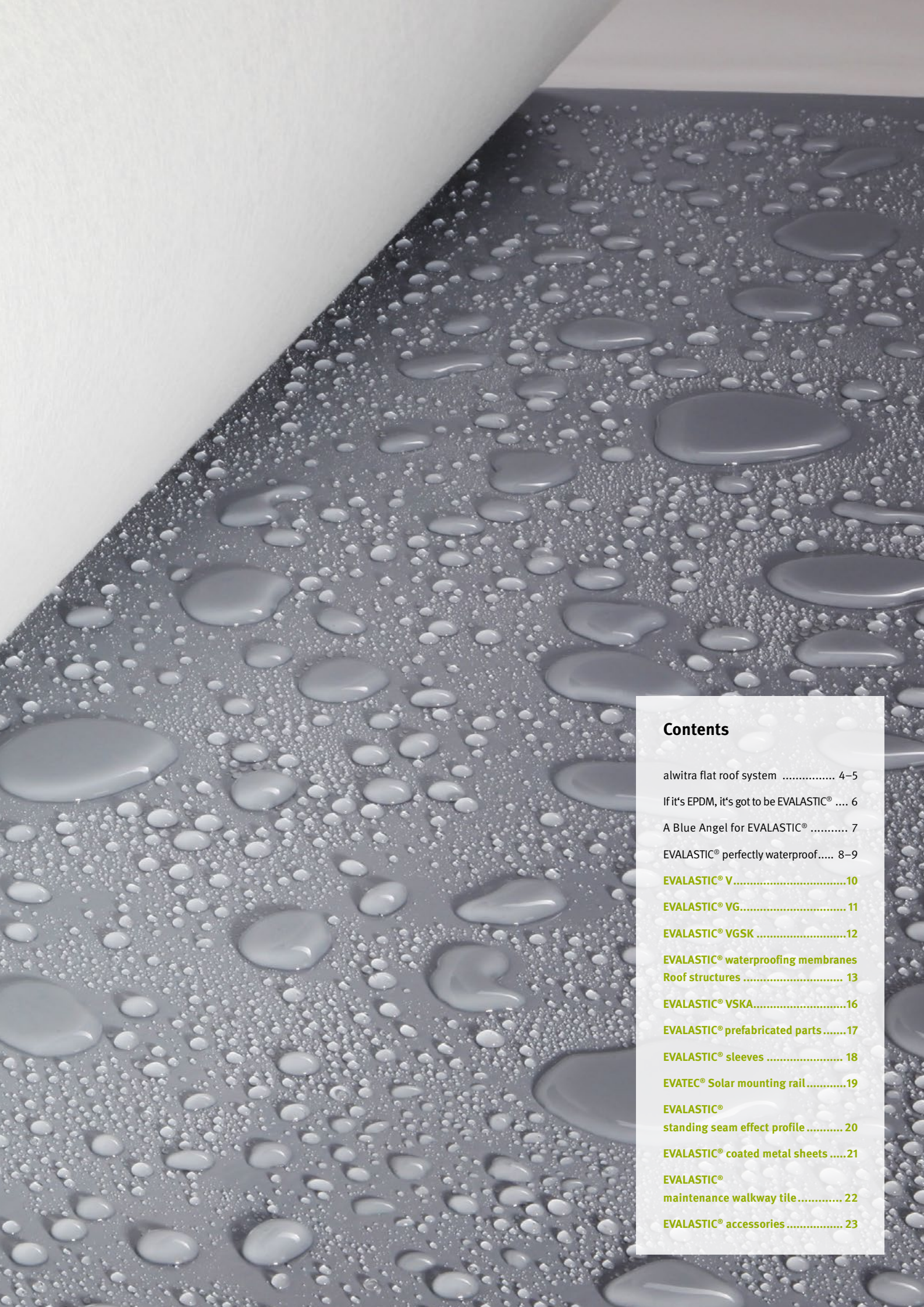
Waterproofing
membranes

The first waterproofing membrane with the Blue Angel – EVALASTIC®



www.blauer-engel.de/uz224

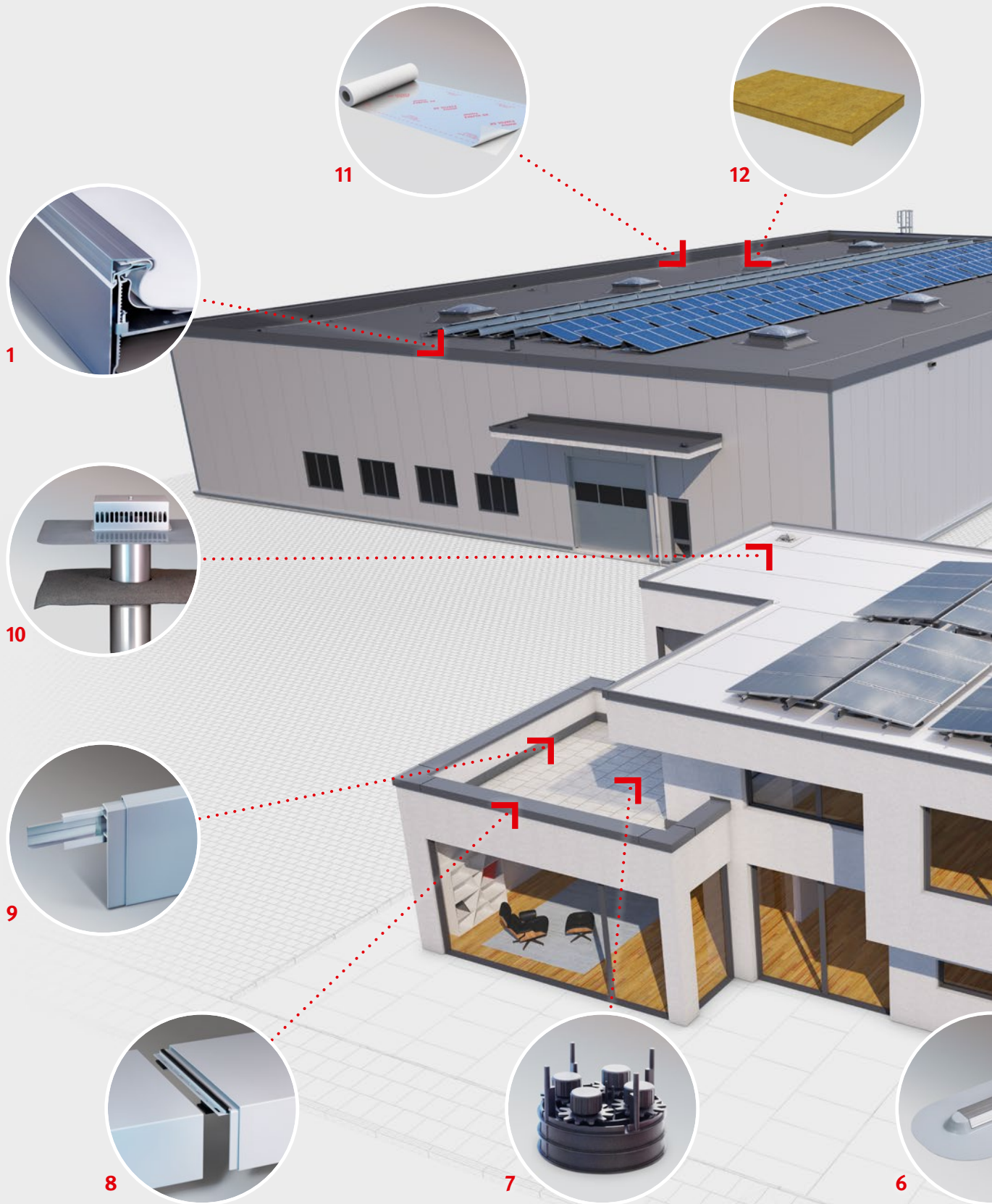




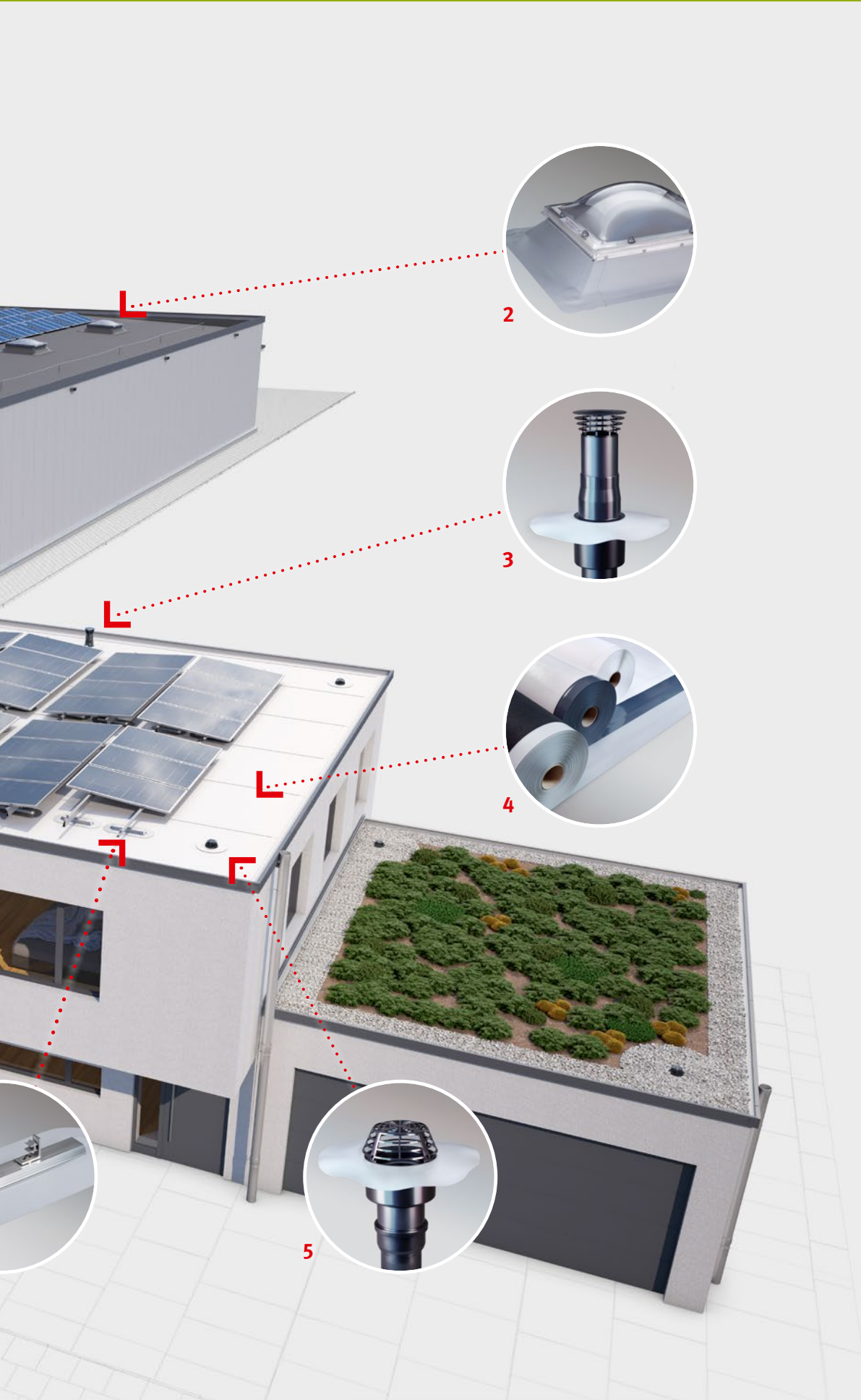
Contents

alwitra flat roof system	4–5
If it's EPDM, it's got to be EVALASTIC®	6
A Blue Angel for EVALASTIC®	7
EVALASTIC® perfectly waterproof.....	8–9
EVALASTIC® V	10
EVALASTIC® VG	11
EVALASTIC® VGSK	12
EVALASTIC® waterproofing membranes Roof structures	13
EVALASTIC® VSKA	16
EVALASTIC® prefabricated parts	17
EVALASTIC® sleeves	18
EVATEC® Solar mounting rail	19
EVALASTIC® standing seam effect profile	20
EVALASTIC® coated metal sheets	21
EVALASTIC® maintenance walkway tile	22
EVALASTIC® accessories	23

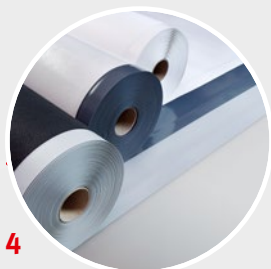
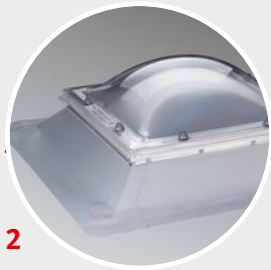
The unique flat roof system from alwitra.



Everything from a single source from roof edge to roof edge.



- 1 Roof edge trim profiles
- 2 Daylight systems
- 3 Flat roof vents
- 4 Waterproofing membranes
- 5 Flat roof drainage
- 6 EVATEC® Solar mounting rail
- 7 Paving slab supports
- 8 Wall capping profiles
- 9 Wall flashing profiles
- 10 EVASTEEL®
- NEW**
- 11 EVAFOL SK vapour barrier
- 12 EVAROC® flat roof insulation boards



If it's EPDM, it's got to be EVALASTIC®

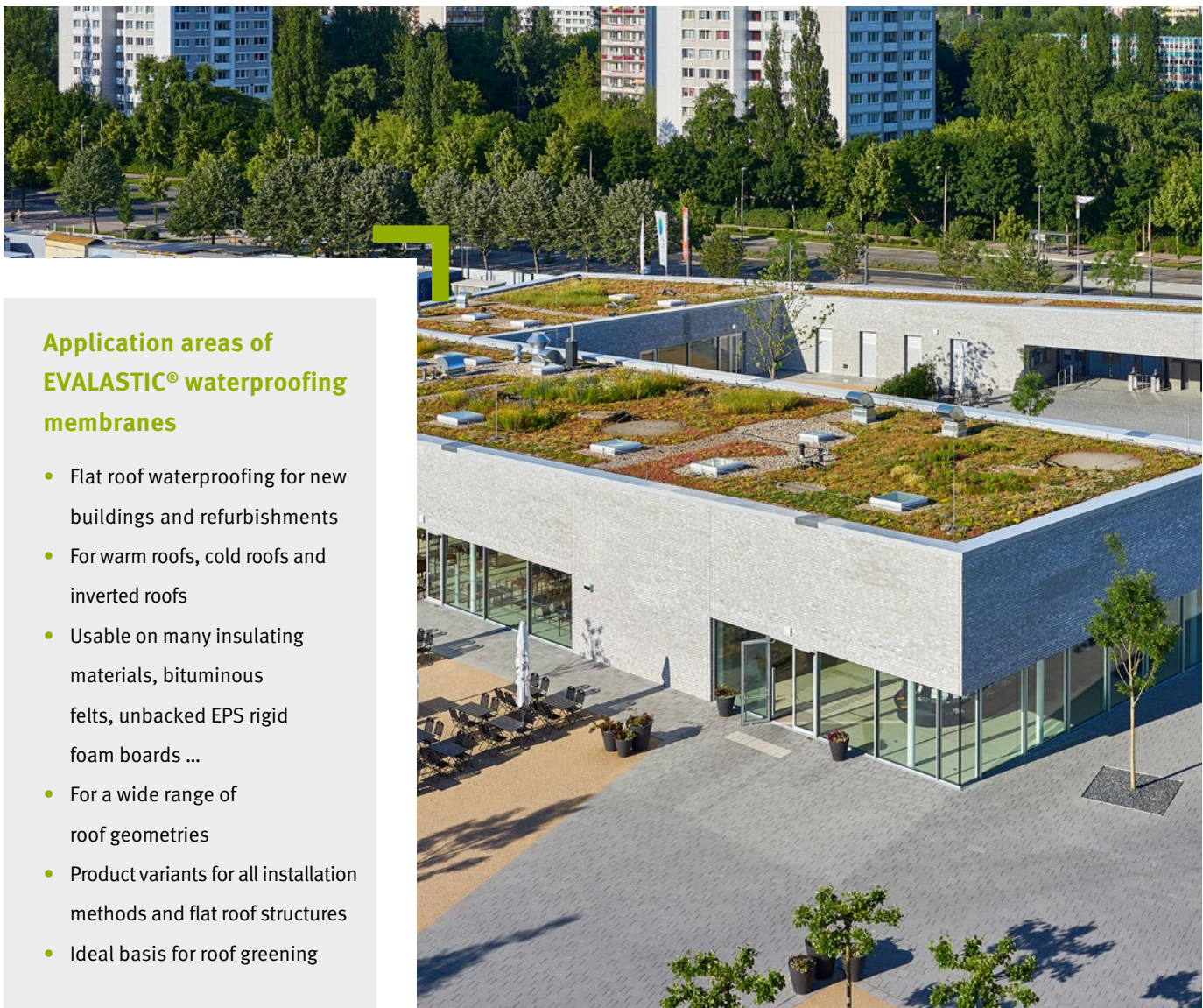
The homogeneously weldable EPDM waterproofing membrane.

EVALASTIC® is an EPDM waterproofing membrane that has proven itself in practice for decades.

The EPDM base polymer from EVALASTIC® is characterised by high resistance to chemicals, exemplary low temperature flexibility and maximum resistance to weathering. The thermoplastic elastomer content guarantees these excellent long-term properties even under extreme weather conditions.

The limited availability of natural resources also requires the construction industry to rethink the selection and use of materials.

Innovative products such as EVALASTIC® waterproofing membranes prove that a sustainable combination of ecology with quality and durability is feasible with modern building materials.



Application areas of EVALASTIC® waterproofing membranes





- Flat roof waterproofing for new buildings and refurbishments
- For warm roofs, cold roofs and inverted roofs
- Usable on many insulating materials, bituminous felts, unbacked EPS rigid foam boards ...
- For a wide range of roof geometries
- Product variants for all installation methods and flat roof structures
- Ideal basis for roof greening

A Blue Angel for EVALASTIC®: The ecotoxicologically harmless EPDM waterproofing membrane

Sustainability needs pioneers:

EVALASTIC® is the first EPDM waterproofing membrane to be awarded the renowned German “Blue Angel” eco-label. Thanks to its ecotoxicological harmlessness, the light-grey waterproofing membrane offers the ideal conditions – also for urban gardening and farming.

The water-friendly EVALASTIC® waterproofing membrane in light grey goes beyond legal requirements and environmental standards by offering a harmless formulation and sustainable production that relies on at least 50 % renewable energy.

 <p>www.blauer-engel.de/uz224</p>	 <p>Ecotoxicologically tested</p>	 <p>100 % free of herbicides</p>	 <p>Sustainable packaging</p>
<p>The Blue Angel is more than just a label. It represents a conscious step towards sustainability, environmental protection and future-orientated construction.</p>	<p>EVALASTIC® in light grey minimises environmentally damaging pollutants in the roof drain water. Guaranteed to be free from harmful chemicals and substances such as lead, halogens, biocides, plasticisers, used oil or pigments -</p> <p>100 % resistant to washing!</p>	<p>Harmless for people and animals: with roof waterproofing with EVALASTIC® in light grey, no harmful herbicides are released into the environment. Plant health, soil quality and the ecological balance are preserved.</p>	<p>The EVALASTIC® sales packaging is made of recycled raw materials (post-consumer material) and has a recycle content of more than 80 %.</p>





EVALASTIC®

The homogeneously
weldable EPDM
waterproofing membrane.

EVALASTIC® consists of a
high-quality **homogeneous
EPDM sealing layer.**

The high-quality sealing layer guarantees homogeneous
connections and a long service life.

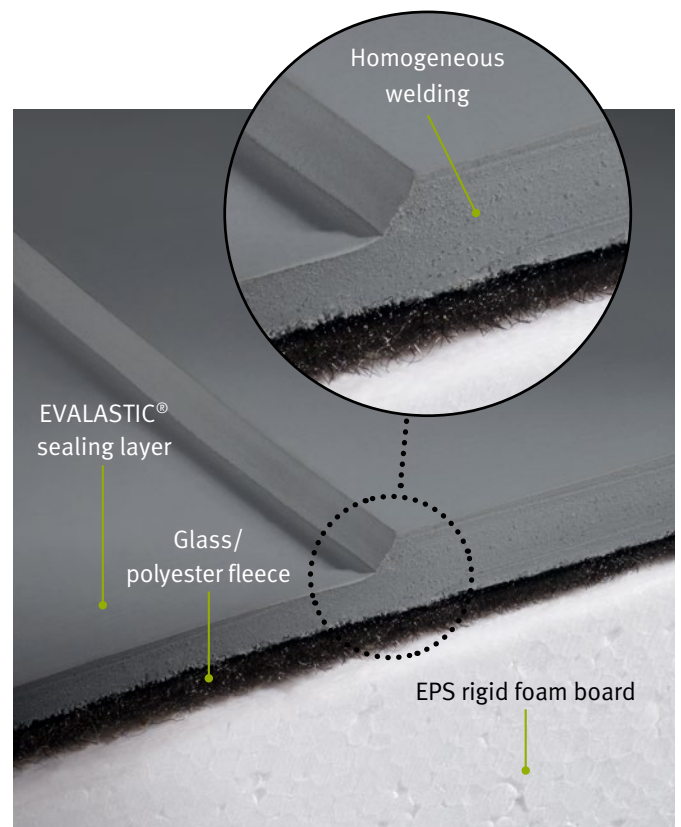
Ecotoxicologically tested –
free from bitumen, PVC,
plasticisers and chlorine.

Water from EVALASTIC® roofs can be used without
reservation for watering ornamental plants and crops.
Also, there is no impact on the groundwater.

How an EPDM roof becomes **perfectly waterproof.**

Perfectly waterproof seam. However close you get.

EVALASTIC® waterproofing membranes can be welded homogeneously and without foreign material by heating with hot air - not only in the prefabricated seam area, but also in any desired place on the membrane.





EVALASTIC® V

- Polyester fleece backing on the underside

EVALASTIC® V waterproofing membranes have a polyester fleece backing on the underside, which acts as a relaxation zone (e.g. vapour pressure relief, movement compensation) after installation. The light grey EPDM waterproofing membrane is available with a homogeneous sealing layer thickness of 1.2 mm or 1.5 mm and is suitable for virtually every installation method. EVALASTIC® V

waterproofing membranes are manufactured with a single or double-sided uncoated self-vedge.

EVALASTIC® V colours

light grey

Whether loose laid under ballast, mechanically fixed or bonded: EVALASTIC® V is suitable for all installation methods.



EPDM waterproofing membranes for every flat roof

Every flat roof is different. That's why we supply EVALASTIC® EPDM waterproofing membranes in different variants for the most diverse applications. This means that precisely the right membrane with the corresponding properties is always available. Of course, we will help you to choose as part of the project planning.

Multi-function hall, Alfter

EVALASTIC® VG



- **Glass/polyester fleece backing on the underside**
- **With integrated fire-retardant layer**

Thanks to the integrated fire-retardant layer, the premium EPDM membranes make a significant contribution to sustainable fire protection, as they can be installed directly on unbacked rigid EPS foam boards without an open flame.

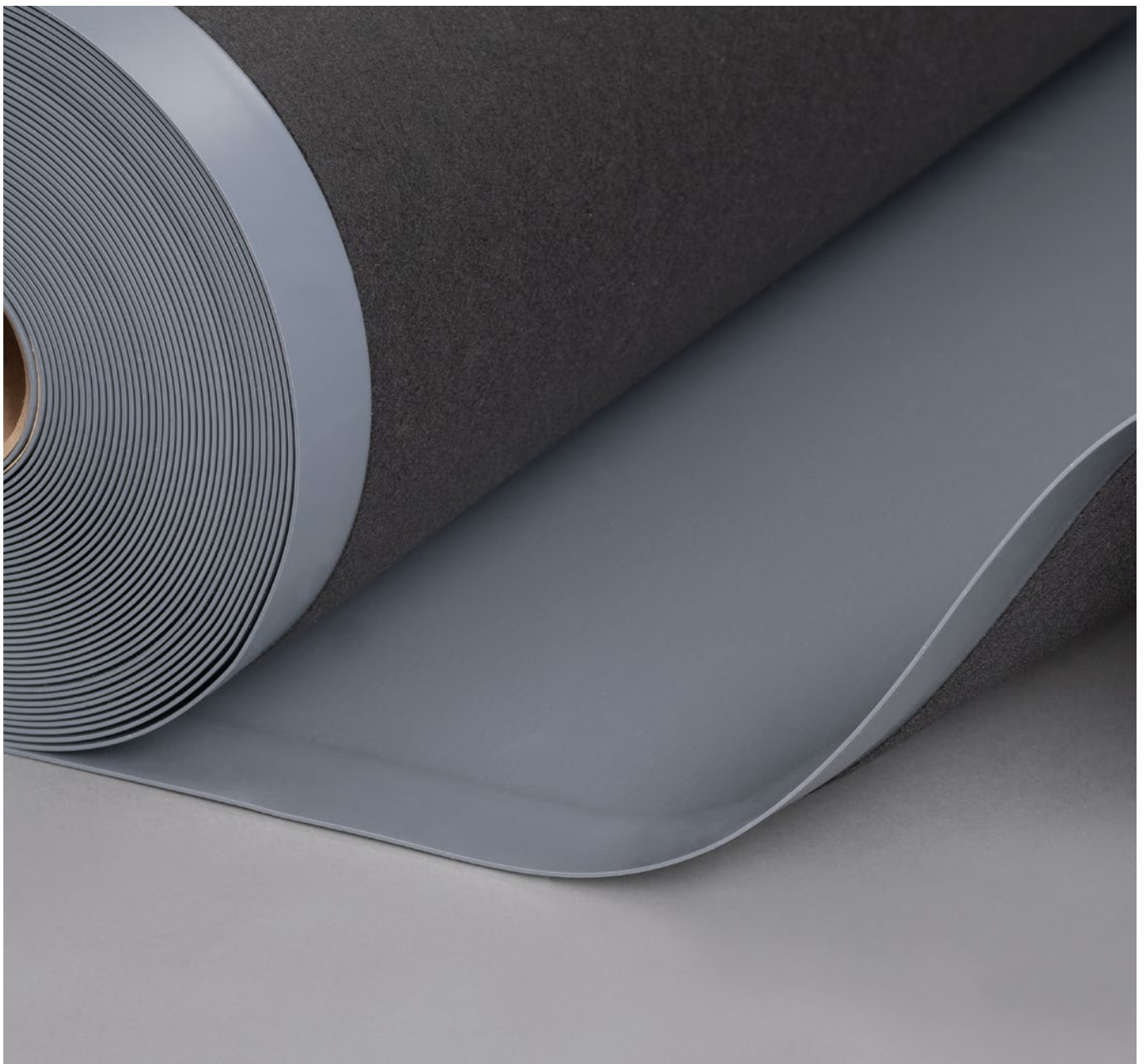
EVALASTIC® VG waterproofing membranes have an effective sealing layer thickness of 1.5 mm and are available in the colours

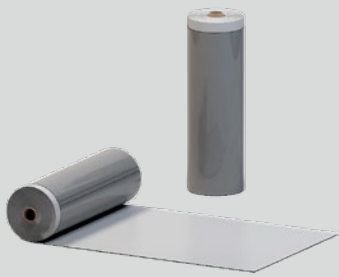
light grey and noble slate grey. The single-sided self-edge enables professional, homogeneous and “perfectly waterproof” joining with hot air.

EVALASTIC® VG colours

light grey

slate grey





EVALASTIC® VGSK

- Glass/polyester fleece backing on the underside
- Bitumen and solvent-free self-adhesive layer
- With integrated fire-retardant layer

EVALASTIC® VGSK has the same properties as the VG type and is additionally coated on the underside with a synthetic adhesive compound. The adhesive layer is free from bitumen and solvents and enables fast, rational, full-surface bonding without the risk of fire.

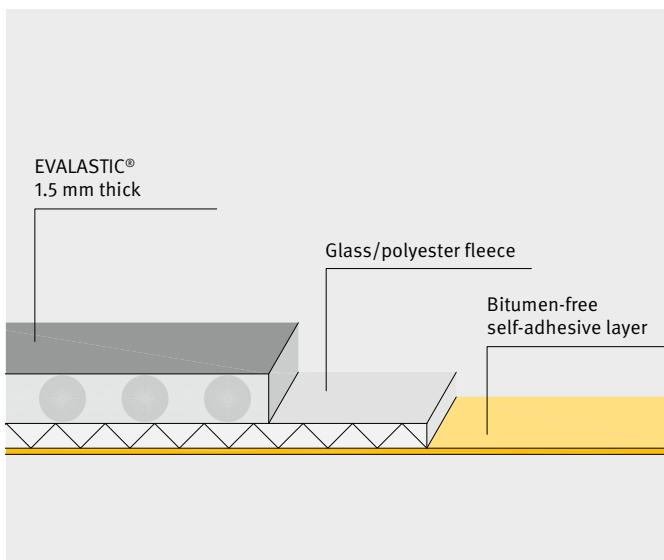
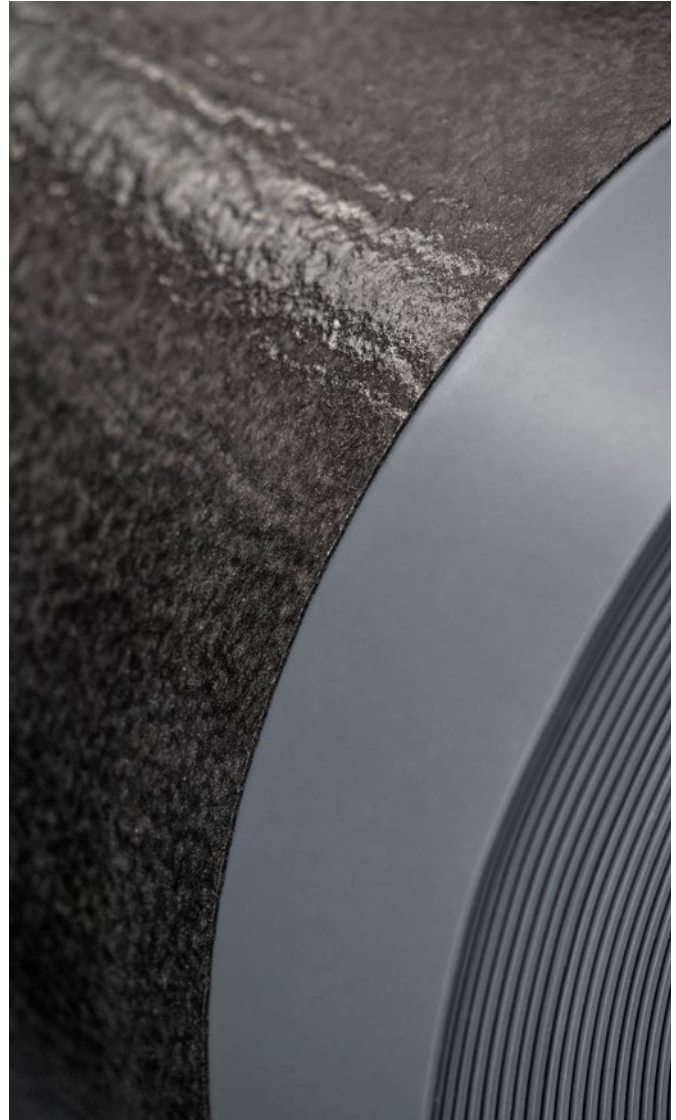
EVALASTIC® VGSK can be installed on numerous backed insulating materials and bituminous felts and is predestined for use on roof areas that need to be refurbished.

In combination with self-adhesive EVALASTIC® VSKA tapes, connections and terminations can also be waterproofed economically and safely without the application of additional adhesive.

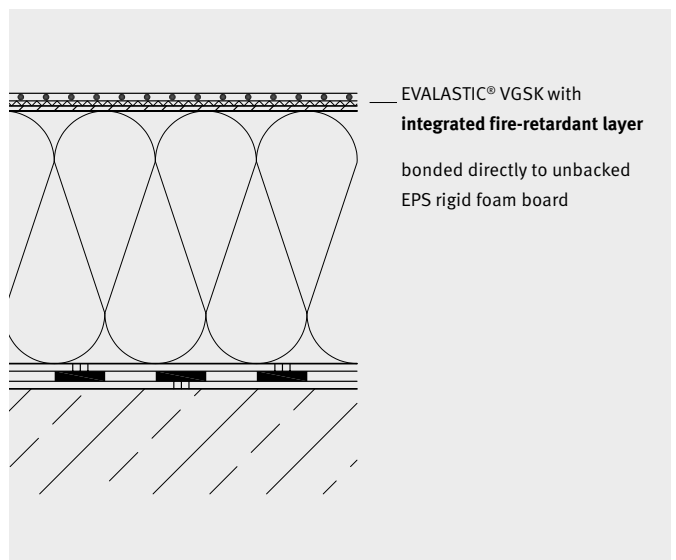
EVALASTIC® VGSK colours

light grey

slate grey

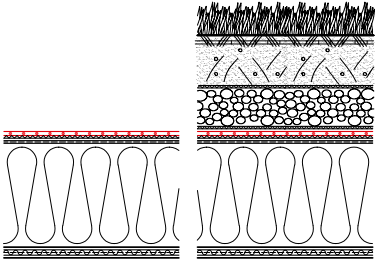
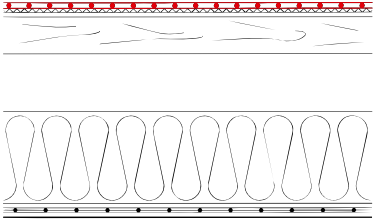
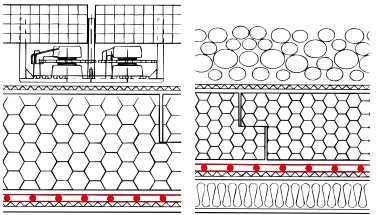


alwitra EVALASTIC® VGSK



New building

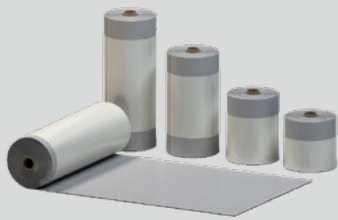
EVALASTIC® waterproofing membranes – installation examples

Installation examples	WATERPROOFING MEMBRANES loose laid with ballast	WATERPROOFING MEMBRANES mechanically fastened	WATERPROOFING MEMBRANES bonded
	of gravel, roof greening, concrete slabs	in the seam overlap or with field fastening	with cold or hot melt adhesives
<p>Non-ventilated roofs (warm roofs)</p> 	<p>EVALASTIC® V EVALASTIC® VG</p> <p>dependent on the use and properties, especially the roughness of the substrate</p>	<p>EVALASTIC® V EVALASTIC® VG</p> <p>dependent on the building material class of the thermal insulating material and the tested roof structure</p> <p>e.g. EVALASTIC® VG directly on unbacked EPS rigid foam board</p>	<p>EVALASTIC® V EVALASTIC® VG EVALASTIC® VGSK</p> <p>on backed thermal insulating materials or fire-retardant layer, dependent on the tested roof structure</p> <p>e.g. self-adhesive EVALASTIC® VGSK directly on unbacked EPS rigid foam board</p>
<p>Ventilated (double-shell) roofs (cold roofs)</p> 	<p>EVALASTIC® V EVALASTIC® VG</p> <p>dependent on the properties, especially the roughness of the substrate</p>	<p>EVALASTIC® V EVALASTIC® VG</p> <p>dependent on the tested roof structure</p>	<p>EVALASTIC® V EVALASTIC® VG EVALASTIC® VGSK</p> <p>on fire-retardant layer, dependent on the tested roof structure</p>
<p>Inverted roofs (DUO roofs)</p> 	<p>EVALASTIC® V EVALASTIC® VG</p> <p>dependent on the properties, especially the roughness of the substrate</p>		

EVALASTIC® – the EPDM waterproofing membrane for durable, waterproof roofs







EVALASTIC® VSKA

The self-adhesive tape.

EVALASTIC® VSKA tapes are membrane tapes (sealing layer thickness 1.5 mm) cut from the long-term proven EVALASTIC® waterproofing membranes. The tapes have an additional polyester fleece backing on the underside and are coated with a synthetic adhesive compound. The fleece backing also acts as a relaxation zone after installation (vapour pressure relief, movement compensation, etc.). The coating is free from bitumen and solvents and is covered in the delivery state by a protective foil.



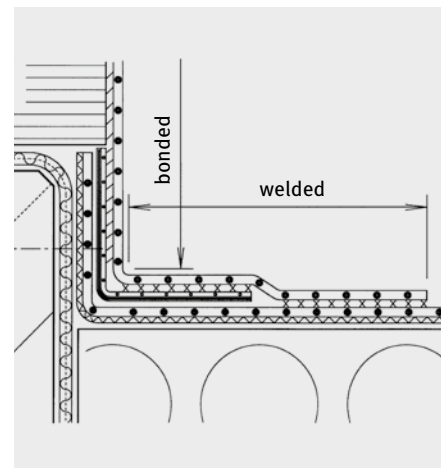
EVALASTIC® VSKA tapes are manufactured with an extra-wide, uncoated selvedge (optionally single or double-sided). This enables simple, homogeneous welding to the EVALASTIC® waterproofing membranes.

In connection with alwitra SK or SK-L primer, the self-adhesive rear-sided coating of the VSKA tapes adheres to many substrates in the roof edge and wall flashing area as well as to various plastics.

EVALASTIC® VSKA colours

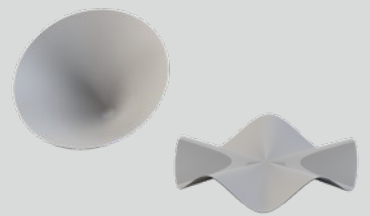
light grey

slate grey



EVALASTIC® prefabricated parts

Internal/external corners, connecting flanges



For the greatest possible security, flexibility and saving of time: The EVALASTIC® prefabricated parts

The EVALASTIC® prefabricated parts meet almost every flat roof requirement, whether corners, penetrations or connections to rooflights. With the comprehensive range of accessories from EVALASTIC®, complicated and time-consuming connection points become child's play.

Fast and simply clean – that's how flat roofs are done.




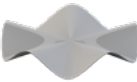



Advantages of the EVALASTIC® prefabricated parts:

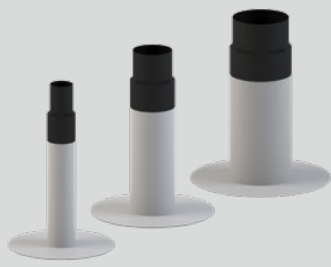
- Weldable with hot air without adhesive
- Clean seam, without bitumen bead
- Child's play, no worries, no aids

A waterproof corner in 3 steps:

Take prefabricated part, position, weld – done!

Product range: EVALASTIC® prefabricated parts

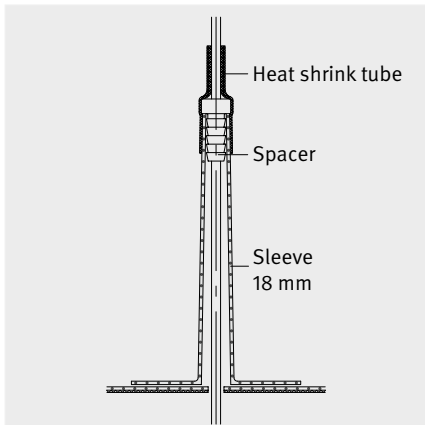
	Product	Product description	Colour
	Internal corner	for wall flashing	light grey/ slate grey
	External corner	for wall flashing	light grey/ slate grey
	Internal corner	for roof edge trim profiles	light grey/ slate grey
	External corner	for roof edge trim profiles	light grey/ slate grey
	Connecting flanges	exact fit for alwitra rainwater outlets and retaining elements, outside diameter (OD) 480 mm, thickness 1.5 mm, for connection to the EVALASTIC® roof waterproofing	light grey/ slate grey



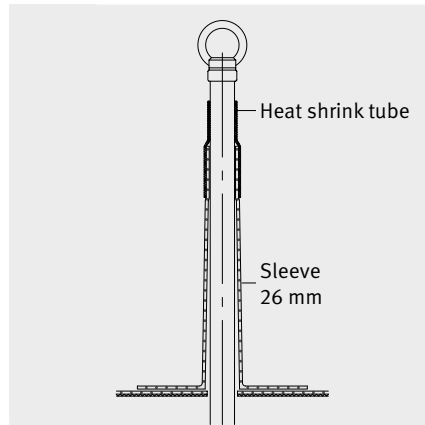
EVALASTIC® sleeves for penetrations/fall protection

The connection of penetrations to the EVALASTIC® roof waterproofing (e.g. cables and flash protection, fall protection) can be done simply and safely using prefabricated EVALASTIC® sleeves.

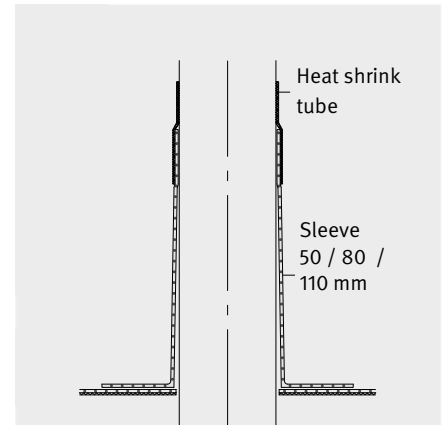
The sleeves consist of an approx. 230 mm-long tube with connecting flange and an approx. 100 mm-long heat-shrink tube with hot-melt adhesive.



Penetration Ø 8 - 18 mm



Penetration Ø 19 - 26 mm

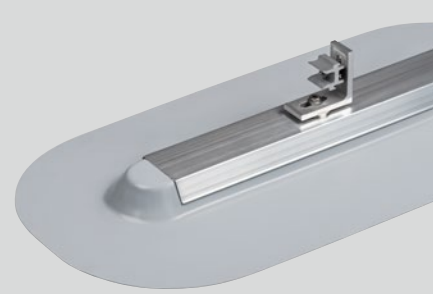


Penetration Ø 27 - 110 mm

EVALASTIC® sleeves

	Product description	Colour	Sleeve selection			
			inside Ø in mm	Outside Ø of penetration min./max. in mm	Heat shrink tube Ø in mm in delivery state	Heat shrink tube Ø in mm after max. shrinkage
	Sleeve for lightning protection and cable penetration/fall protection incl. heat shrink tube	light grey/slate grey	18	8 / 18	32	7,5
			26	19 / 26	50	18
	Sleeve for penetrations incl. heat shrink tube	light grey/slate grey	50	27 / 50	70	26
			80	51 / 80	90	36
			110	81 / 110	120	40

EVATEC® Solar mounting rail



The patented alwitra EVATEC® Solar mounting rail is a structurally verifiable fastening system for the safe installation of solar systems on roof areas with EVALASTIC® or EVALON® waterproofing.

The EVATEC® Solar mounting rail is placed on the finished roof waterproofing and fixed directly in the base course with (long) roofing screws. Roof openings are not necessary. The EVATEC® Solar mounting rail does not need any extra ballast. Acting loads are induced directly into the base course of the roof and not into the roof waterproofing.

The German Institute of Building Technology (Deutsche Institut für Bautechnik – DIBt) has issued a **General Building Authority Approval** and a **General Construction Technique Permit** for EVATEC® Solar. **This means additional security for planners, installers and operators.**

The innovative EVATEC® Solar fastening system is a consistent extension of the extensive and proven alwitra flat roof system.

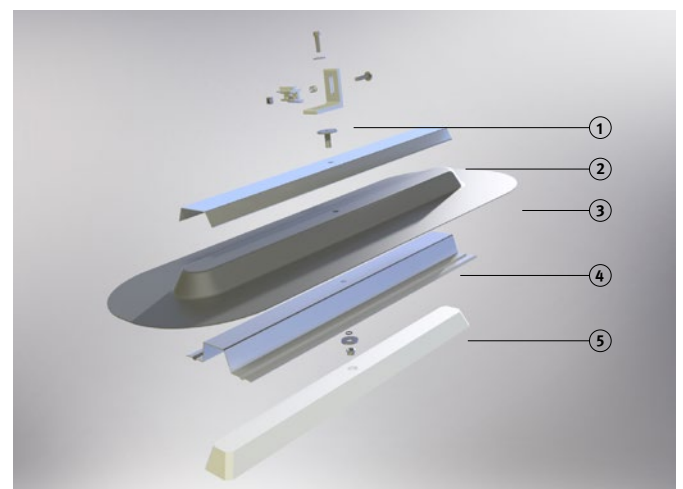
alwitra. That's how flat roofs are done. With a system.

Advantages:

- Simple, safe installation without damaging the roof waterproofing
- Absolutely waterproof thanks to proven homogeneous welding to EVALASTIC® waterproofing membranes
- Particularly suitable for roofs with low load capacity reserves
- Structural safety for elevated PV systems
- No ballast required to secure the position
- Load dissipation by mechanical anchoring in the load-bearing layer, hence no load dissipation via the roof waterproofing
- Simple connection using rapid system connectors
- Usable on a multitude of different roof structures
- Very durable thanks to corrosion-resistant, non-rusting materials
- In comparison with conventional systems,
 - no thermal effects occur
 - no sliding/wandering of PV generators (caterpillar effect)
- Much easier construction of the PV system with lower maintenance requirement
- No special tools needed
- Clear separation of the electrical and roof systems

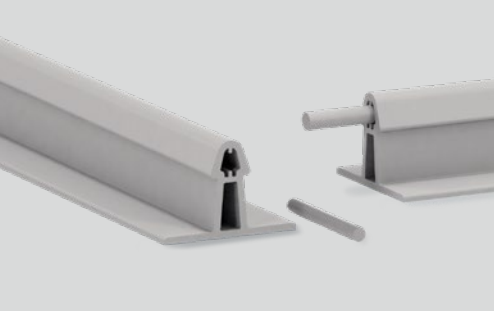


EVATEC® Solar 450 with a rapid system connector
(Rapid system connector is included, but not factory-fitted)



Exploded illustration of the alwitra EVATEC® Solar mounting rail:

- | | |
|--|----------------------------|
| ① Rapid system connector | ④ Aluminium support rail |
| ② Aluminium cover rail | ⑤ Insulating material core |
| ③ Prefabricated part made of EVALASTIC® or EVALON® | |



EVALASTIC® standing seam effect profile

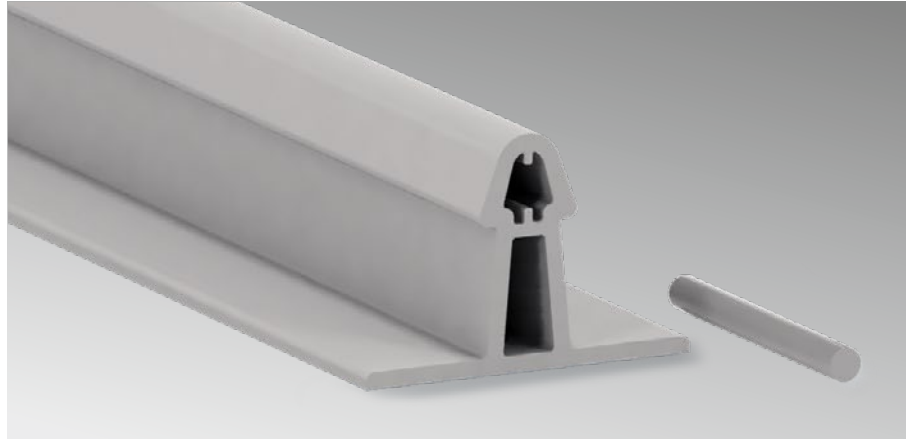
Structuring the roof is as simple as this.

In addition to the reliable protection of a building, owners and architects are attaching increasing importance to the appearance of their roof surface.

To accentuate a roof, the roof surface can be structured with EVALASTIC® standing seam effect profiles. Apart from the appearance, there are also functional reasons favouring the use of the standing seam effect profile. This way, for example, rainwater is fed purposefully away from the roof.

The use of standing seam effect profiles is also possible on slightly sloping roof surfaces. Other types of roof covering reach their limits here.

The EVALASTIC® standing seam effect profile can be retrofitted if desired.

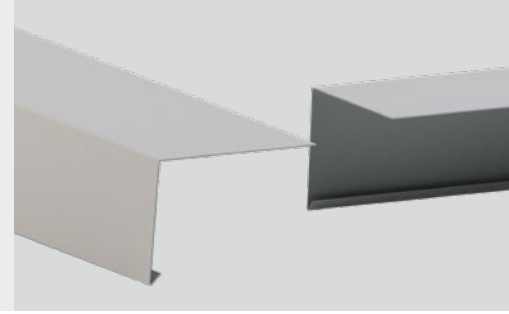


Hotel Garni Muttler Alpinresort & Spa, Switzerland

EVALASTIC® standing seam effect profile - product specifications/scope of delivery

Product description	Length	Colours	Packing unit	Installation	Installation notes
Extruded hollow profile	2 m	light grey, slate grey, other colours on request	90 m/cardboard box (dowel pins to connect the profiles are included)	with hot air	Installation: primarily ridge – eaves; usually positioned on the seam; in case of closer distance e.g. in the centre of the membrane

EVALASTIC® coated metal sheets



Usable for a wide range of installations and an important part of a sophisticated complete flat roof system:

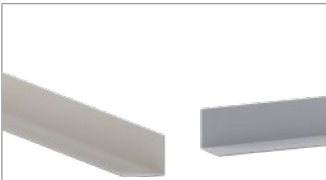
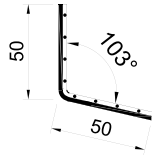
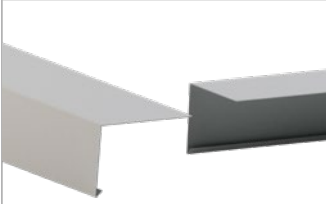
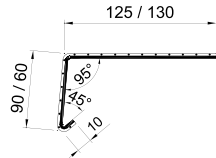
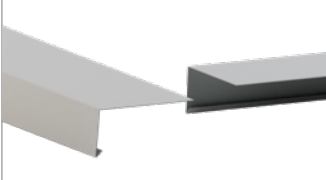
EVALASTIC® coated metal sheets are galvanised and coil-coated thin metal sheets. Thanks to the duplex coating on both sides, they are optimally protected against corrosion.

Thanks to the EVALASTIC® coating on the upper side, they can be welded homogeneously to the EVALASTIC® waterproofing membranes.

In addition to coated metal sheets, EVALASTIC® coated metal sheet profiles are available as perimeter fastening or eaves flashing.



EVALASTIC® coated metal sheet profiles (sold only in whole bundles)

	Dimensions in mm	Designation	Bar length	Colour	Bars/bundle
		Perimeter fastening	2 m	light grey/ slate grey	5
		Eaves flashing 90	2 m	light grey/ slate grey	5
		Eaves flashing 60			



EVALASTIC® maintenance walkway tile



Safe maintenance walkways on the roof.

As part of the efficient use of the available space, building systems are increasingly being installed on flat roof surfaces. This allows the optimum design of production lines and other operational facilities.

The placing of systems on flat roofs means that the maintenance areas and the walkways leading to them are subject to higher loads. For that reason, it is advantageous to design these areas as inspection and maintenance walkways.

Purpose of use

EVALASTIC® maintenance walkway tiles are used to protect the waterproofing and for the visual marking of maintenance walkways on flat roofs.

The materials used in these areas should be slip-resistant and provide a high level of protection from perforation.

Due to their structured surface, the EVALASTIC® maintenance walkway tiles provide a secure footing on slightly sloping and wet surfaces. Even with high wind loads, displacement of the maintenance walkway tiles is prevented by hot air welding to the EVALASTIC® waterproofing membranes.



Product specifications: EVALASTIC® maintenance walkway tiles

Material	Product design	Dimensions			Installation
		Length x width	Thickness	Weight	
analog to EVALASTIC® waterproofing membranes, UV and weather-resistant	Colour: dark grey Surface: structured Rib height: 4 mm Underside: smooth	approx. 800 x 600 mm	approx. 8.5 mm	approx. 6.9 kg/m ² or approx. 3.3 kg/tile	Hot air welding

EVALASTIC® accessories

Adhesives/cleaners/primer



Strong adhesive for strong waterproofing membranes.

Whether primer, cleaners or adhesives: our system accessories and auxiliary materials have been specially designed and tested for the safe installation of our waterproofing membranes.

Product range: adhesives / cleaners / primer

Product	Product details	Container size	Packaging unit/pallet
alwitra L 40 adhesive	Synthetic rubber adhesive for bonding EVALASTIC® waterproofing membranes; can be applied with a roller or brush	25 kg 9.5 kg	12 containers 30 containers
alwitra PUR S750 adhesive	For bonding EVALASTIC® waterproofing membranes with a fleece backing on the underside	750 ml	12 cans Sold exclusively in full packaging units of 12 cans/cardboard box
alwitra PU foam gun	With 60 cm lance		
alwitra waterproofing membrane cleaner	Not suitable for cleaning the seam area!	2 kg	
alwitra L 40 cleaner	Tool cleaner	10 l	
alwitra SK-L primer	For bonding EVALASTIC® self-adhesive membranes	25 l 10 l	12 pieces 42 pieces
alwitra SK primer¹	For bonding EVALASTIC® self-adhesive membranes	25 l 10 l	12 pieces 42 pieces

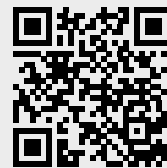
¹ solvent-free

#unitedontop

The information, technical details or installation instructions contained in this document have been compiled to the best of our knowledge and were considered correct at the time of publication. alwitra is committed to continuous improvement and therefore reserves the right to change or supplement the product specifications without prior notice, in particular if necessitated by changes in the law. No rights can be derived from this document. Subject to changes and typographical/printing errors.

This version replaces all earlier versions. To obtain the latest version of this document, scan the QR code or use this link:

www.alwitra.de/en/downloads



Version 1. 07/2025

alwitra GmbH

54229 Trier · Germany · Phone: +49 651 9102-0

export@alwitra.de · www.alwitra.de