



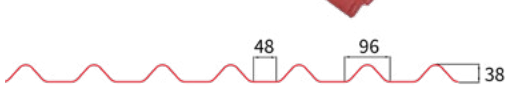
ONDULINE TILE[®]



Onduline[®]
Lightweight roofing systems

ONDULINE TILE®

The convenience of the long sheets with the beauty of the small tile.



Lightweight

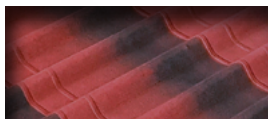
Watertight

Sound absorbing

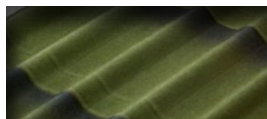
No rust

Eco-friendly

COLOR 颜色 WARNA



Dual Red 3D



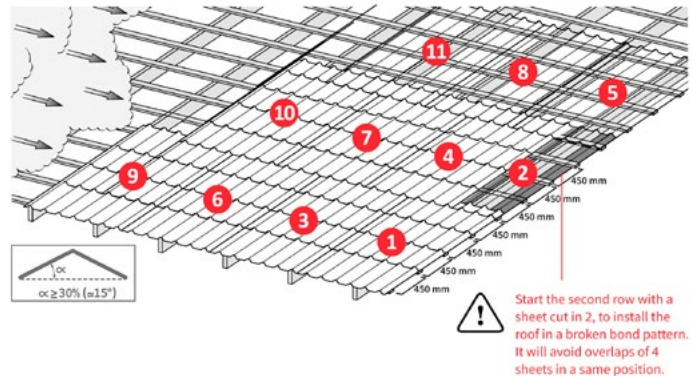
Dual Green 3D

SPECIFICATION 规范 SPECIFIKASI

Material 材料 Bahan	Cellulose Bitumen 纤维素沥青 Bitumen Selulosa
Length 长度 Panjang	2000 mm
Width 宽度 Lebar	970 mm
Area per sheet 面积 Kawasan setiap keping	1.94 m ²
Thickness 厚度 Ketebalan	3 mm
Height of corrugation 波高 Ketinggian beralun	38 mm
# Corrugation 波数 Bilangan beralun sekeping	7 Corrugations + 6 Flats
Weight 重量 Berat	6.1 kg (3.1 kg per m ²)

INSTALLATION GUIDELINE 修复指南 PANDUAN PEMASANGAN

ROOF PITCHES	> 10° (over 17%)	5° - 10° (9% - 17%)
Maximum Purlin Distance	450 mm 	Full deck or close batten
Minimum end Overlap	200 mm (with embossed lines) 	200 mm (with embossed lines)
Minimum side Overlap	1 corrugation 	2 corrugations
Screws should be drilled at each corrugation at the end overlap and side overlap. To ensure a long-lasting and guaranteed roof, it is mandatory to follow the nailing order and pattern.	<p>Fastener positioning is pre-marked on the sheets</p> <p>Minimum 1 corrugation out of 2</p> <p>At eave, 1 fastener per corrugation</p> <p>18 fasteners per sheet. Start fixing edges first</p>	



General

- Start fixing sheets at the opposite to prevailing winds end of the roof.
- Start every second row with a sheet cut in half vertically in order to avoid side overlaps in the same line on all length of the roof, thus creating a broken bond pattern.
- Using a broken bond pattern reduces the overall thickness of the overlapping.

Contact us for more information.