



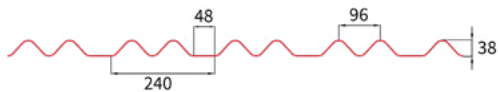
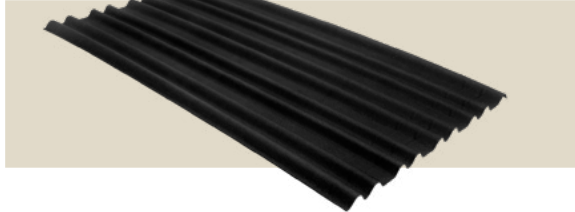
ONDULINE DURO[®] 235



Onduline[®]
Lightweight roofing systems

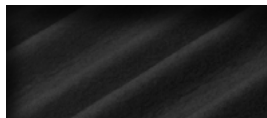
ONDULINE DURO® 235

Lightweight corrugated roofing sheets in a novel design.



- 
Lightweight
- 
Wind resistant
- 
Waterproofing
- 
No rust
- 
Eco-friendly

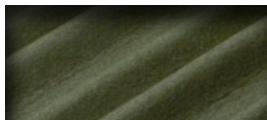
COLOR 颜色 WARNA



Black



Red



Green



Brown

SPECIFICATION 规范 SPECIFIKASI

Material 材料 <i>Bahan</i>	Cellulose Bitumen 纤维素沥青 Bitumen Selulosa
Length 长度 <i>Panjang</i>	2000 mm
Width 宽度 <i>Lebar</i>	1055 mm
Area per sheet 面积 <i>Kawasan setiap keping</i>	2.11 m ²
Thickness 厚度 <i>Ketebalan</i>	3 mm
Height of corrugation 波高 <i>Ketinggian beralun</i>	38 mm
# Corrugation 波数 <i>Bilangan beralun sekeping</i>	9 Corrugations + 4 Flats
Weight 重量 <i>Berat</i>	6.97 kg (3.3 kg per m ²)

INSTALLATION GUIDELINE 修复指南 PANDUAN PEMASANGAN

ROOF PITCHES	> 15° (over 27%)	10° - 15° (17% - 27%)	5° - 10° (9% - 17%)
Maximum Purlin Distance	600 mm 	450 mm 	Full deck or close batten
Overhang at eaves	70 mm 	70 mm 	70 mm
Minimum end Overlap	200 mm 	200 mm 	300 mm
Minimum side Overlap	1 corrugation 	1 corrugation 	2 corrugations
Screws should be drilled at each corrugation at the end overlap and side overlap. To ensure a long-lasting and guaranteed roof, it is mandatory to follow the nailing order and pattern.	11 screws (3+3+5) 	14 screws (3+3+3+5) 	16 screws (4+4+8)



General

- Start fixing sheets at the opposite to prevailing winds end of the roof.
- Start every second row with a sheet cut in half vertically in order to avoid side overlaps in the same line on all length of the roof, thus creating a broken bond pattern.
- Using a broken bond pattern reduces the overall thickness of the overlapping.

Contact us for more details